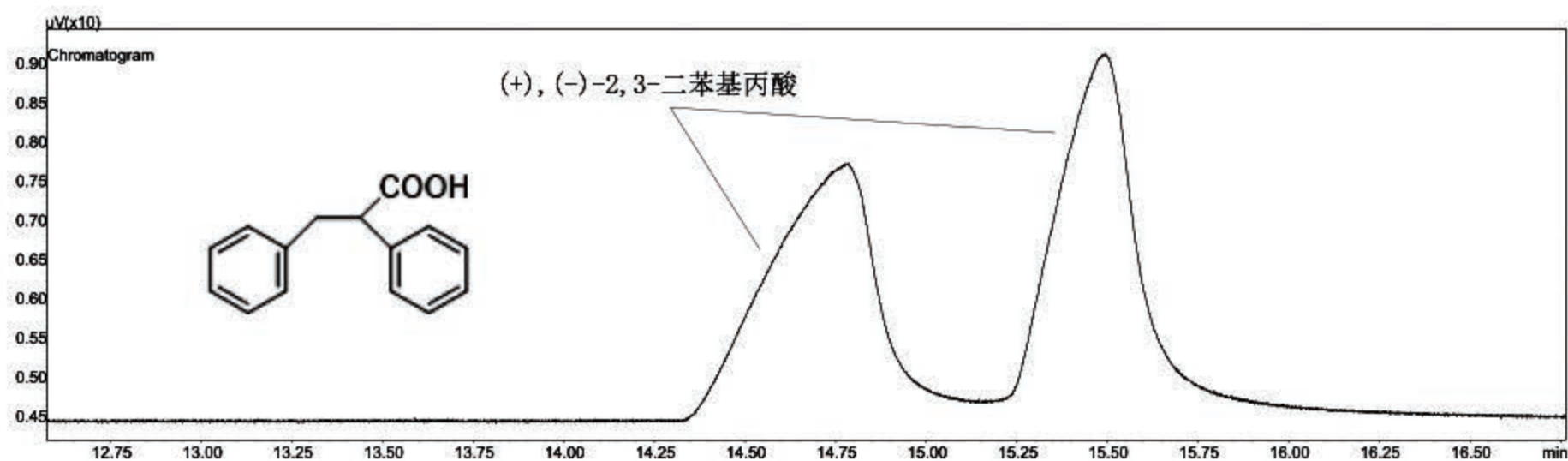




毛细管柱:
MEGA-DEX DAC Beta FAST(快速)-0.10mm,0.10 μ m,5m
目录代码: DEXF-DAC-B-101-010-5

柱箱程序: 150 $^{\circ}$ C, 恒温

载气: 氦气 0.4mL/min



Acknowledgments: many thanks to Barbara Sgorbini, Cecilia Cagliero, Chiara Cordero and Carlo Bicchi, Università di Torino, Dipartimento di Scienza e Tecnologia del Farmaco, Via P. Giuria, 9, Torino, Italy.