

## 甾醇类(三甲基硅醚)衍生物花生油 on MEGA-LAP Column

Column: **MEGA-LAP - 0.32mm, 0.10 $\mu$ m, 25m**

Catalog Code: C-LAP-032-010-25

**MEGA-LAP (Lipid Analysis Phase) is a dedicated stationary phase optimized for Lipids, Sterols and saturated and unsaturated Triglycerides separations, stable over 370°C.**

条件:

进样口: 分流 300°C, 1:80分流比, 1.0 $\mu$ L进样量

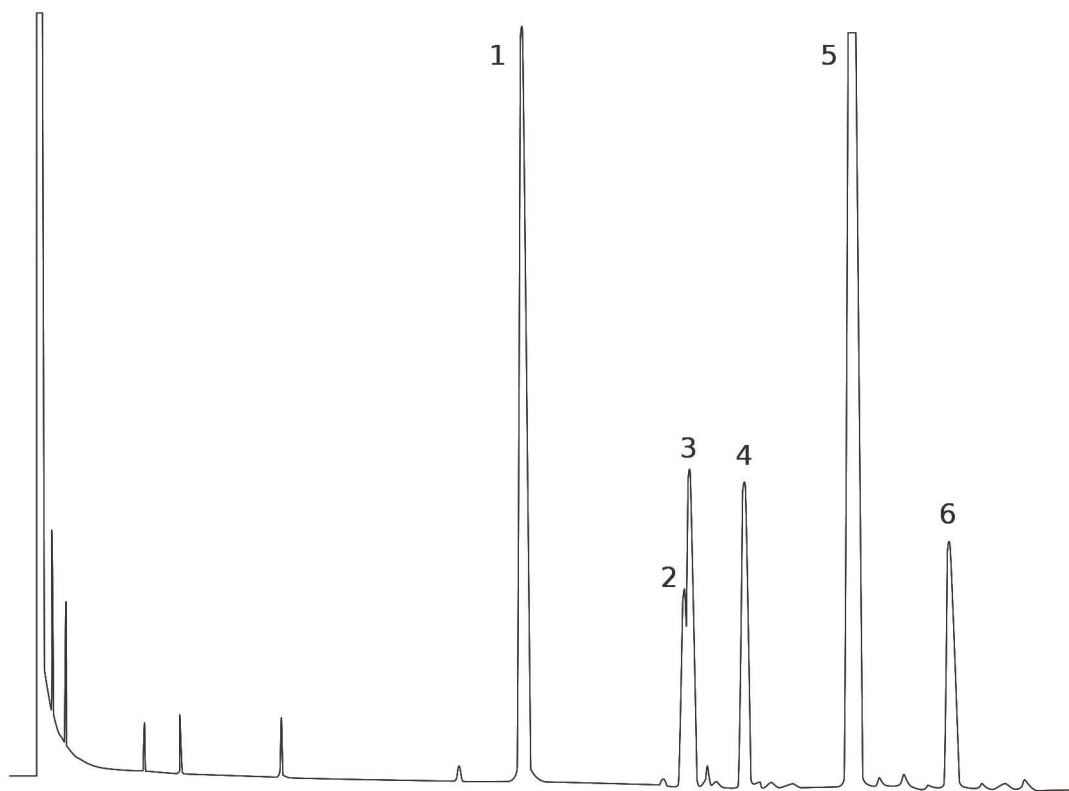
检测器: FID 300°C

柱温箱程序: 260°C

载气: 氢气, 2mL/min

### Peaks:

1. Alpha-cholestanol (I.S.)
2. 22,23-dihydro-brassicasterol
3. Campesterol
4. Stigmasterol
5. Sitosterol
6.  $\Delta$ 5-campesterol



Acknowledgement: Dott. C. Mariani - Stazione Sperimentale Oli e Grassi, Via Giuseppe Colombo 79 - Milano - Italy.