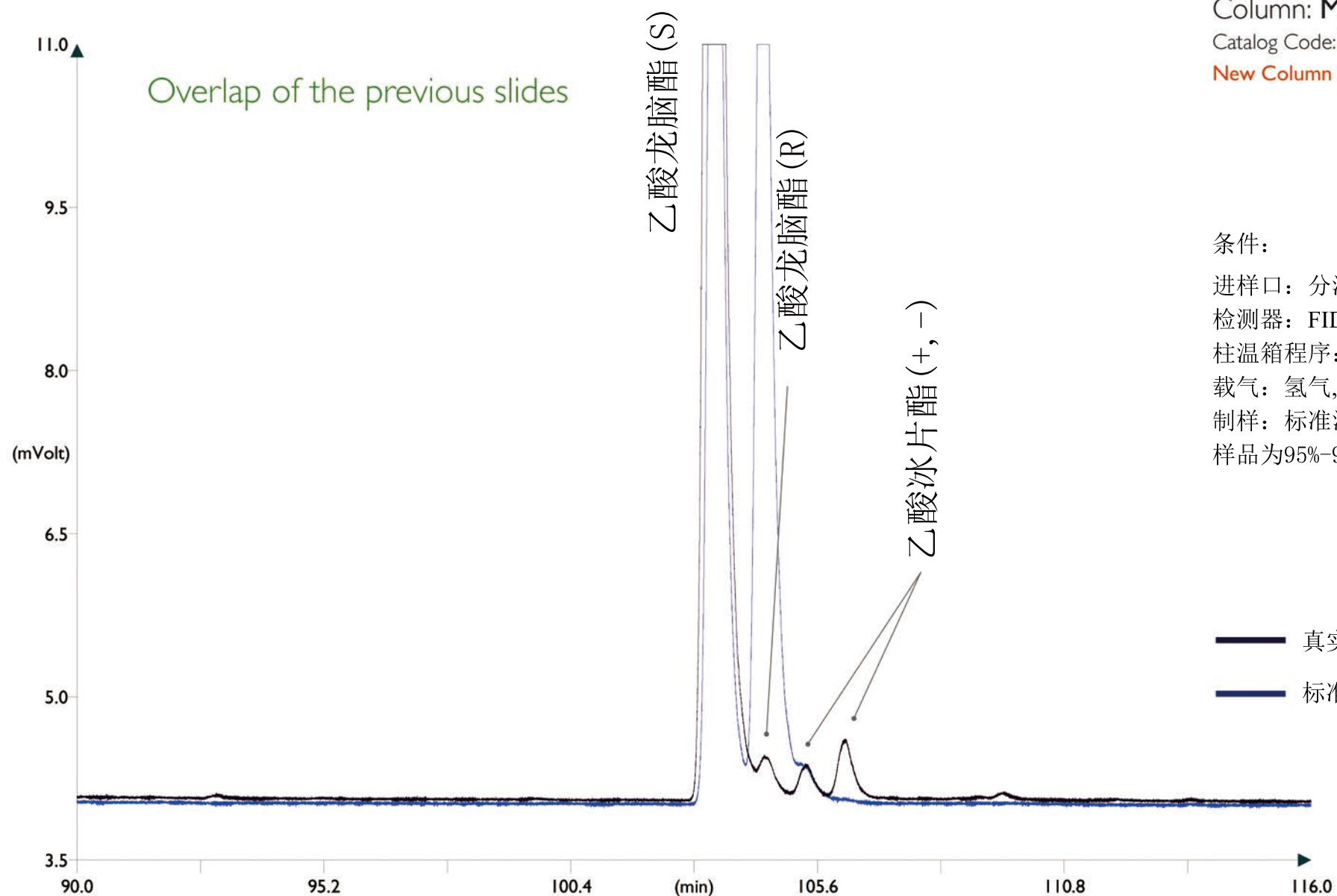


# 乙酸龙脑酯和乙酸冰片酯



Column: **MEGA-DEX G-01** - 0.25mm, 0.25 $\mu$ m, 60m

Catalog Code: DEX-G01-025-025-60

New Column

条件:

进样口: 分流 230 $^{\circ}$ C, 75mL/min分流比, 0.5 $\mu$ L进样量

检测器: FID 250 $^{\circ}$ C

柱温箱程序: 40 $^{\circ}$ C, 0.5 $^{\circ}$ C/min

载气: 氢气, 180kPa(最优条件为氦气, 300kPa)

制样: 标准混合, 1mL正己烷中溶解1 $\mu$ L样品,

样品为95%-97%的乙酸龙脑酯和3%-5%的乙酸冰片酯

This separation is very difficult to obtain, for this it is recommended to follow the chromatographic conditions here reported, which are the optimized parameters for this analysis.