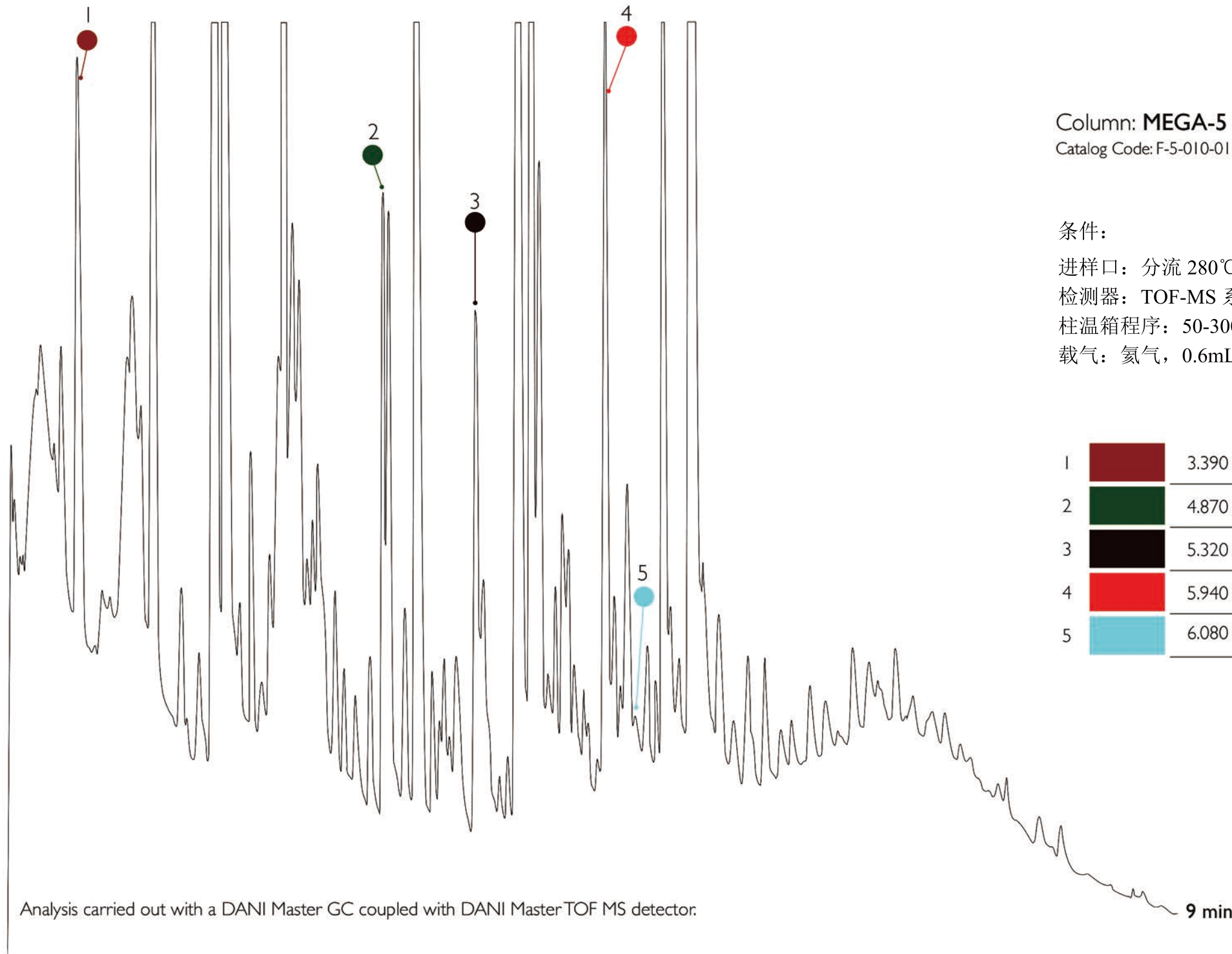


血浆样品中的药物



Column: **MEGA-5 FAST - 0.10mm, 0.10 μ m, 10m**
Catalog Code: F-5-010-010-10






条件:

进样口: 分流 280 $^{\circ}$ C, 1 μ L进样量

检测器: TOF-MS 系统

柱温箱程序: 50-300 $^{\circ}$ C (2min), 35 $^{\circ}$ C/min

载气: 氦气, 0.6mL/min

1		3.390 min	Ecgonidine (ME)	芽子定
2		4.870 min	Caffeine	咖啡因
3		5.320 min	Tetramisole	四咪唑
4		5.940 min	Cocaine	可卡因
5		6.080 min	Benzoyllecgonine (TMS)	甲基安非他命

Analysis carried out with a DANI Master GC coupled with DANI Master TOF MS detector.

TIC