

异薄荷醇，新薄荷醇和
新异薄荷醇

Chiral Separation on MEGA-DEX Columns

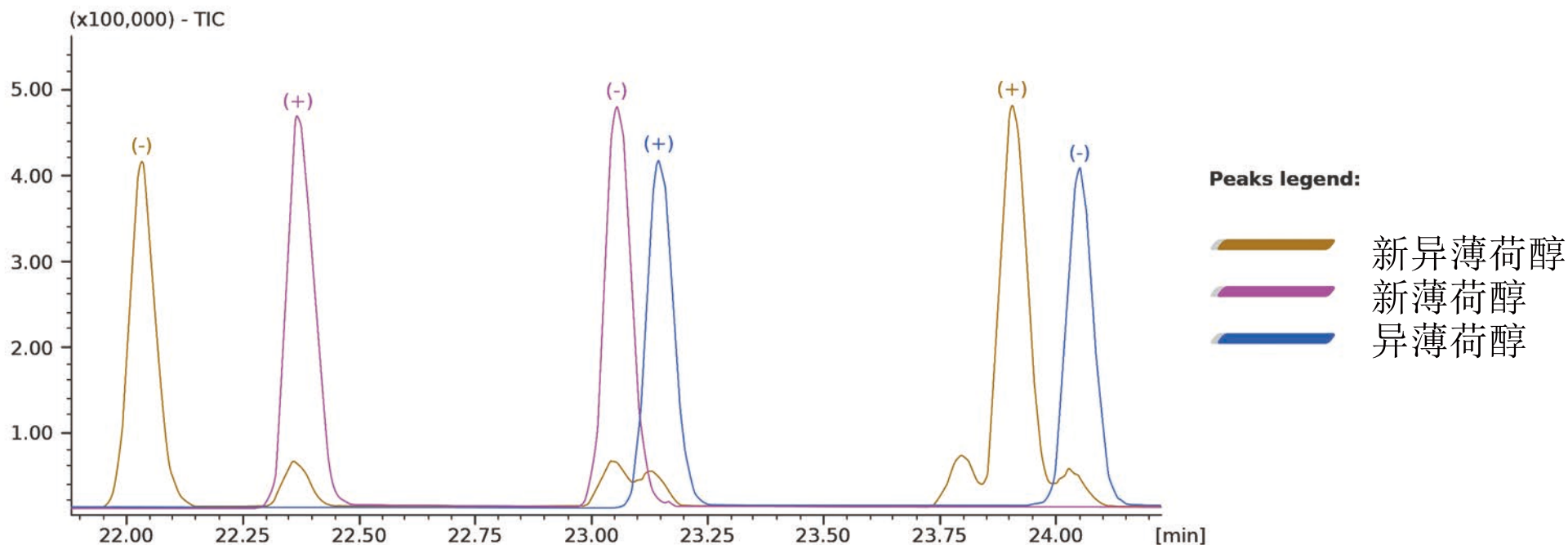
条件:

进样口: 分流 250°C, 1:50分流比, 0.5μL进样量

制样: 标准混合, 1mL正己烷中溶解1μL样品

Column: **MEGA-DEX DET Beta - 0.25mm, 0.25μm, 25m**

Catalog Code: DEX-DET-B-025-025-25



Acknowledgement: Prof. C.Bicchi, C.Cordero et al. - Università di Torino, Dipartimento di Scienza e Tecnologia del Farmaco, Via Pietro Giuria, 9 - Torino - Italy.