

# 威士忌 (直接分流进样)

Column: **MEGA-624 - 0.25mm, 1.40 $\mu$ m, 60m**

Catalog Code: C-624-025-140-60

USP G43 stationary phase

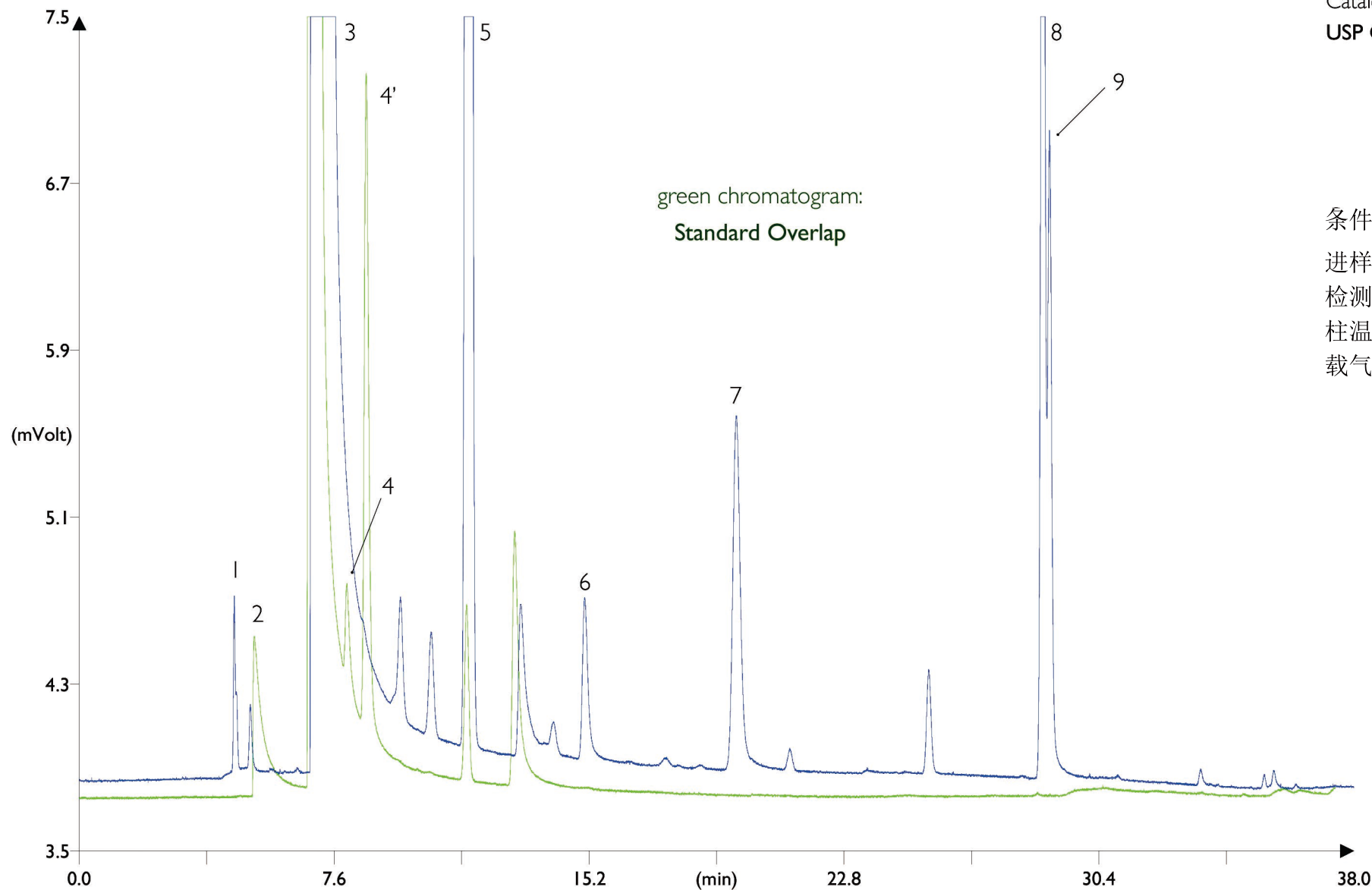
条件:

进样口: 分流 200 $^{\circ}$ C, 120mL/min分流比, 0.5 $\mu$ L进样量

检测器: FID 250 $^{\circ}$ C

柱温箱程序: 35-50 $^{\circ}$ C, 1 $^{\circ}$ C/min

载气: 氢气, 120kPa



1. Acetaldehyde
2. Methanol (standard)
3. Ethanol
4. Acetone
- 4'. Isopropanol
5. n-Propanol
6. Ethyl Acetate
7. Isobutanol
8. Isoamyl alcohol
9. Active amyl alcohol