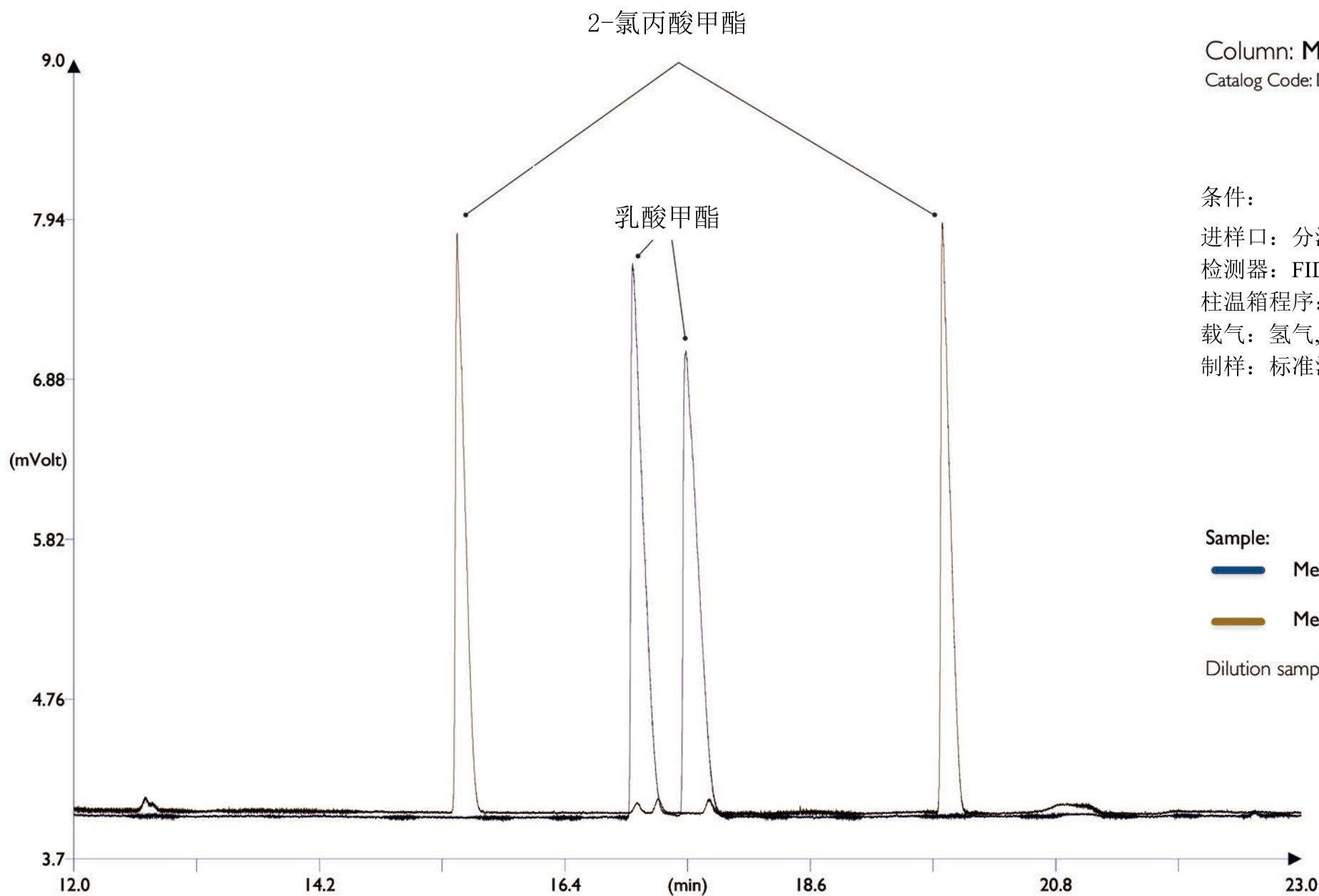


乳酸甲酯和2-氯丙酸甲酯手性分离

dex xeb
chiral columns



Column: **MEGA-DEX DAC Beta - 0.25mm, 0.25 μ m, 25m**
Catalog Code: DEX-DAC-B-025-025-25

条件:

进样口: 分流 250 $^{\circ}$ C, 80mL/min分流比, 0.5 μ L进样量

检测器: FID 250 $^{\circ}$ C

柱温箱程序: 40-150 $^{\circ}$ C, 2 $^{\circ}$ C/min

载气: 氢气, 75kPa

制样: 标准混合, 1 μ L/2mL正己烷中溶解样品

Sample:

— Methyl DL-Lactate, Sigma-Aldrich Cat. # 69822.

— Methyl 2-chloro Propionate, Alfa Aesar Cat. # A18541.

Dilution sample: 1 μ L/2mL in n-Hexane each.

MEGA[®]

www.mega.mi.it