

溶剂 on MEGA-SOLVE Columns

Column: **MEGA-SOLVE 1 - 0.32mm, 0.25 μ m, 50m**

Catalog Code: C-SOLVE1-032-025-50

MEGA-SOLVE Columns are especially developed for analysis of very complex mixtures of solvents.

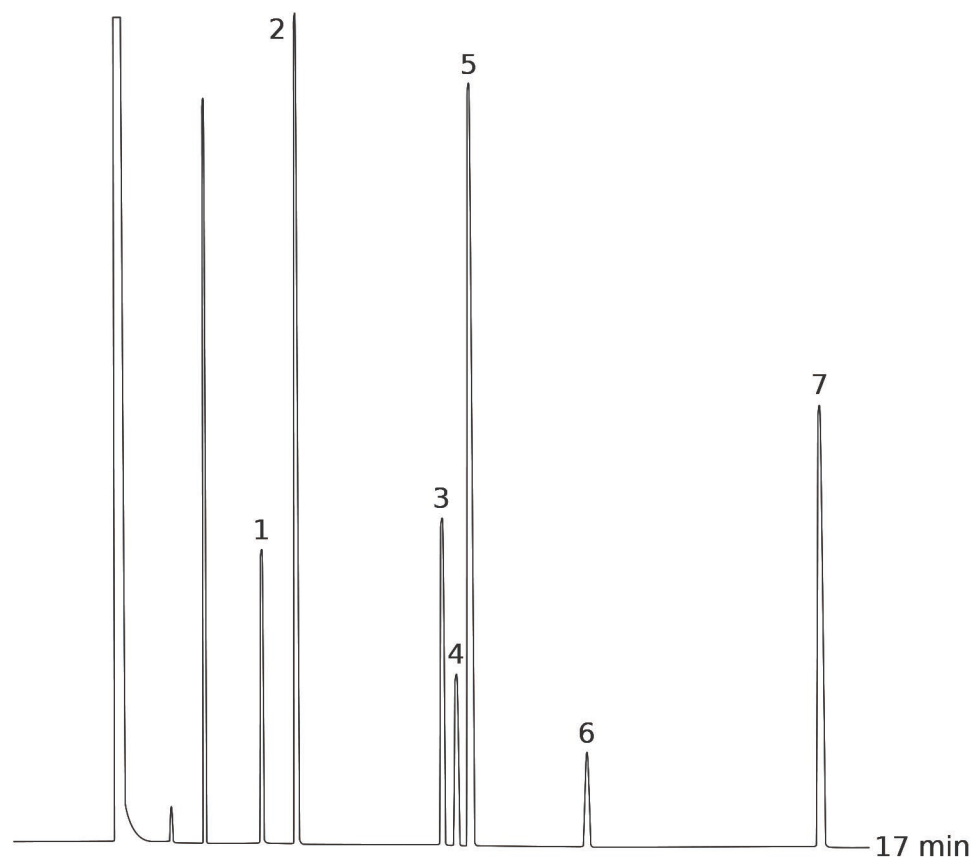
条件:

进样口: 分流 200 $^{\circ}$ C, 1:70分流比, 0.5 μ L进样量

检测器: FID 200 $^{\circ}$ C

柱温箱程序: 35-60 $^{\circ}$ C, 1 $^{\circ}$ C/min

载气: 氦气, 2.5mL/min



Peaks:

1. Ethanol
2. Toluene
3. Ethylbenzene
4. m-Xylene
5. p-Xylene
6. o-Xylene
7. Pyridine